

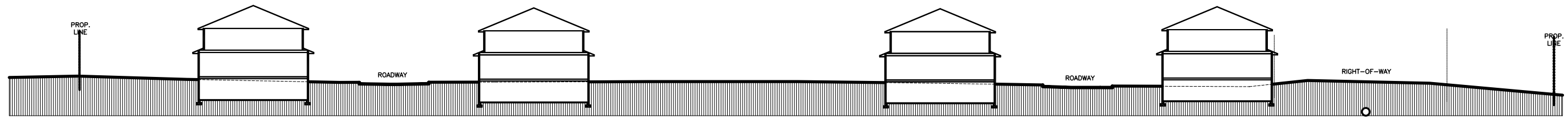
99 UNIT TOWNHOUSE DEVELOPMENT STONY PLAIN, ALBERTA

DEVELOPMENT PERMIT
APPLICATION DRAWINGS
APRIL 12, 2007

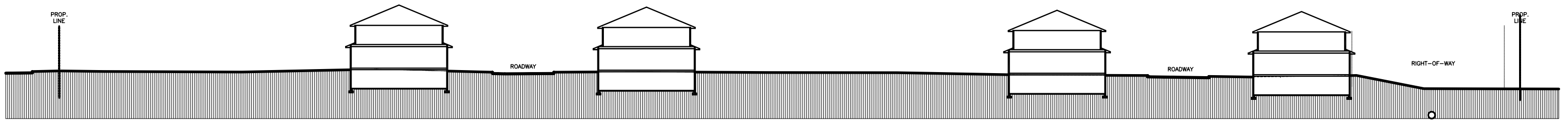


1291667 ALBERTA LTD.
o/a BERKSHIRE VILLAGE
CALGARY, ALBERTA

ROBERT ROSS
ARCHITECT
EDMONTON, ALBERTA



SECTION 1

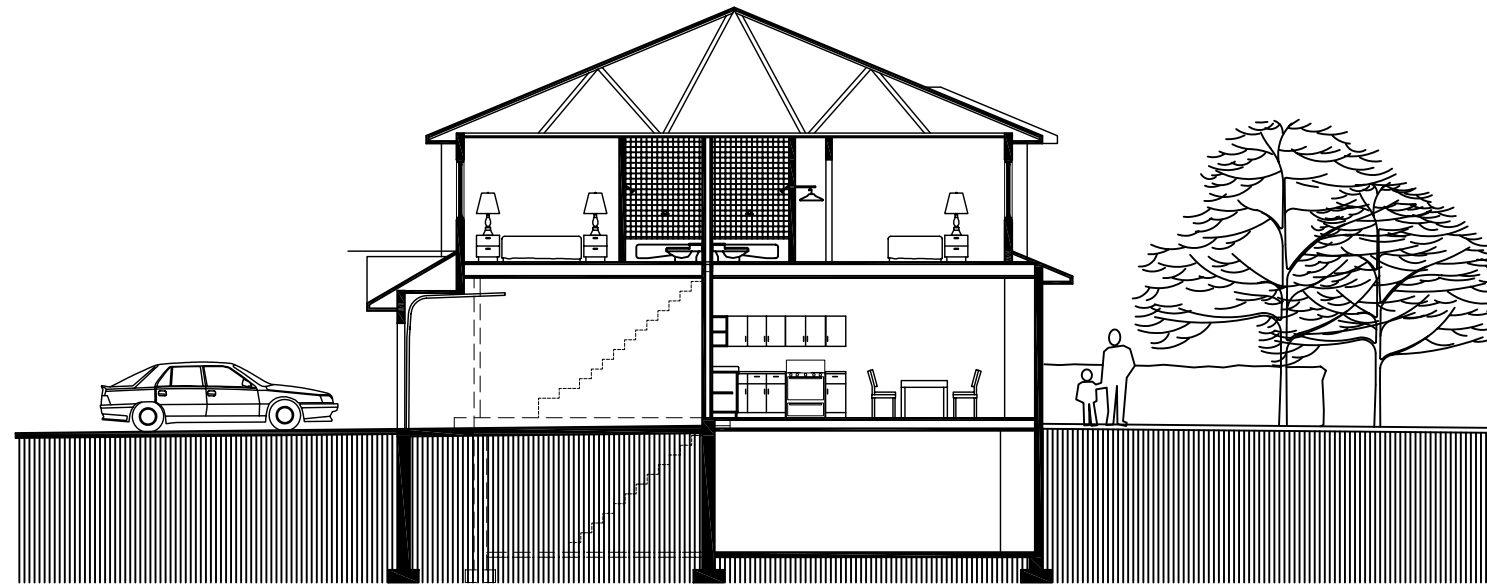


SECTION 2

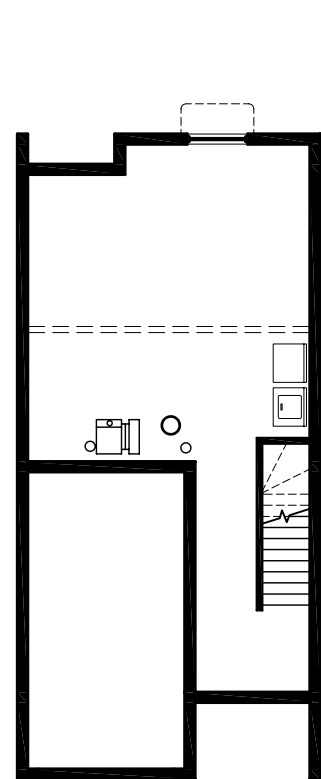


SECTION 3

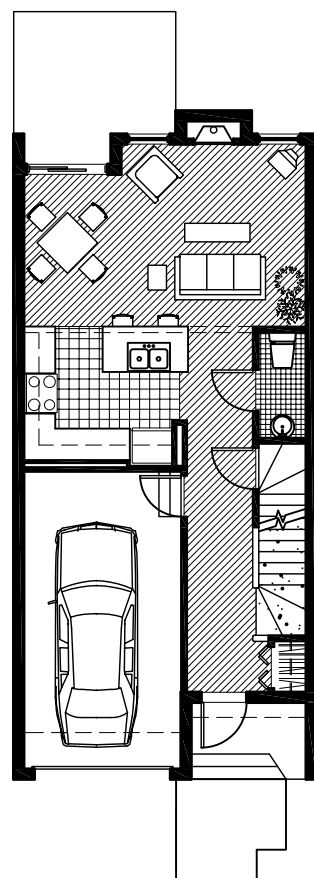




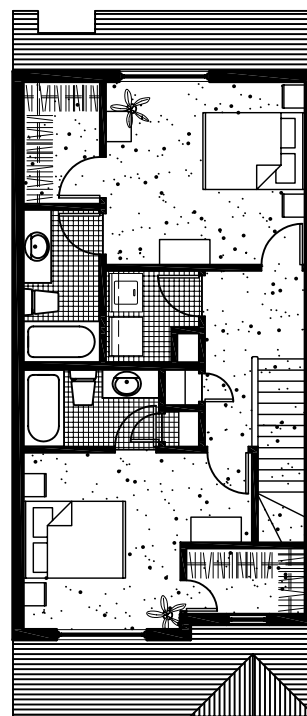
SECTION



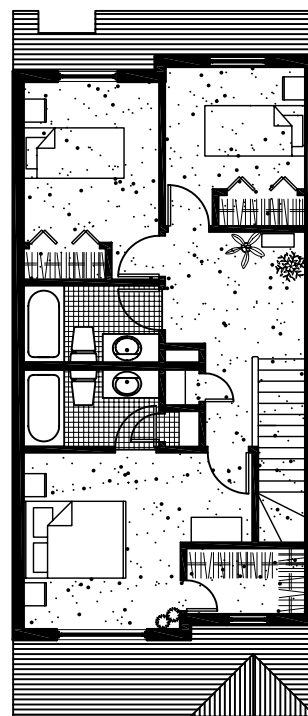
BASEMENT FLOOR PLAN



MAIN FLOOR PLAN



SECOND FLOOR
2 BEDROOM



SECOND FLOOR
3 BEDROOM



BERKSHIRE VILLAGE
CALGARY, ALBERTA

99 UNIT TOWNHOUSE DEVELOPMENT
STONY PLAIN, ALBERTA

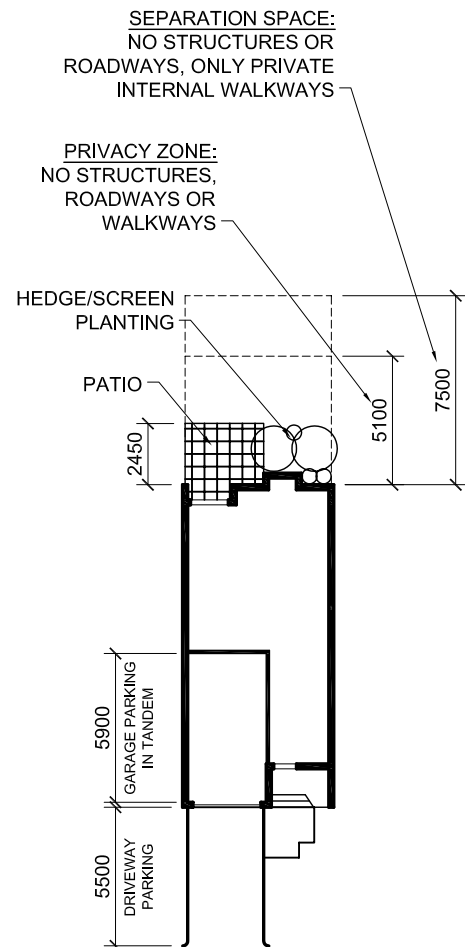
SCALE:
1:150
DATE:
APRIL, 2007

PLANS, SECTION, ELEVATIONS

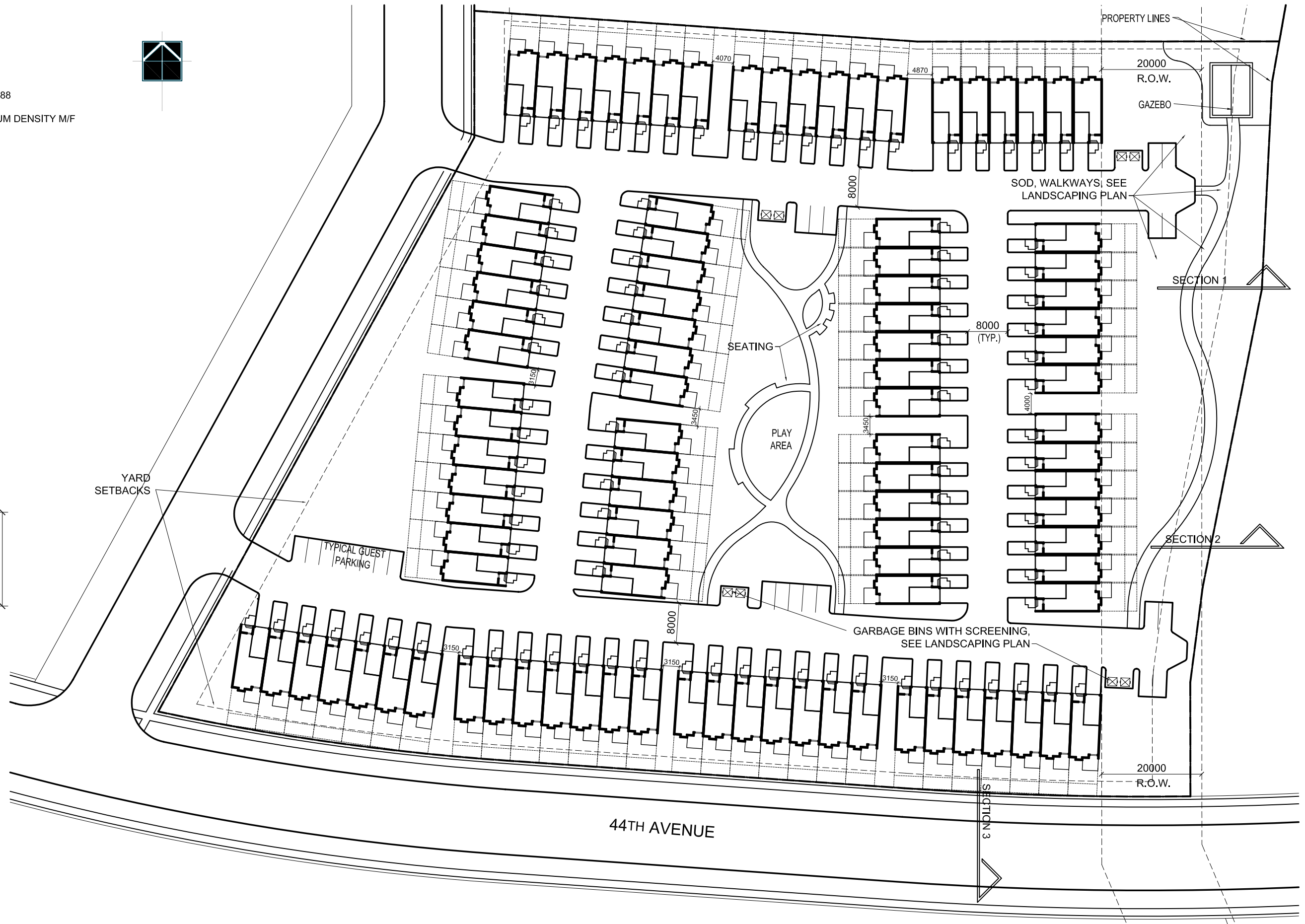
P3

STATISTICS:

LEGAL DESCRIPTION:	LOT 4 BLOCK 3 PLAN 052 6588
ZONING:	R-2M, MEDIUM DENSITY M/F
SITE AREA:	2.67 Ha
ALLOWABLE DENSITY:	107 UNITS
ACTUAL DENSITY:	99 UNITS
ALLOWABLE SITE COVERAGE:	40%
ACTUAL SITE COVERAGE:	28.7%
FRONT YARD:	6000
REAR YARD:	7600
SIDE YARD:	1500
FLANKING SIDE YARD:	3000
PARKING REQUIRED:	
FOR UNITS:	198
GUEST:	20
PARKING PROVIDED:	
FOR UNITS:	99/99 = 198
GUEST:	24



UNIT SPATIAL ORGANIZATION



BERKSHIRE VILLAGE
CALGARY, ALBERTA

99 UNIT TOWNHOUSE DEVELOPMENT
STONY PLAIN, ALBERTA

SCALE:
1:750
DATE:
APRIL, 2007

SITE PLAN

P1